

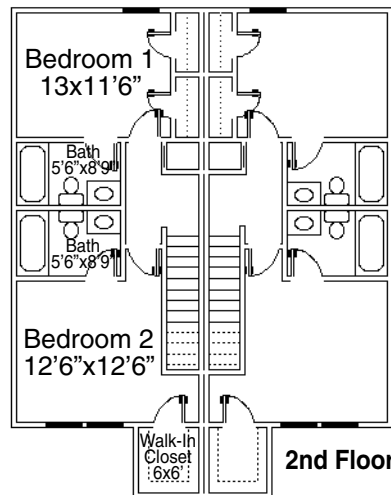
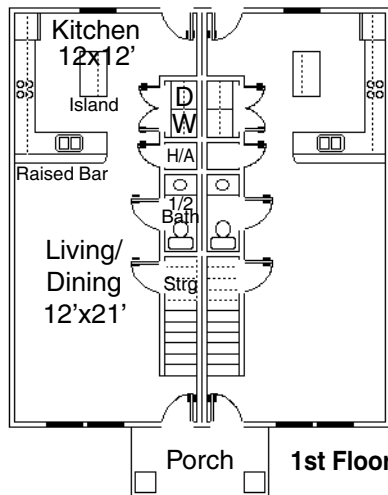
M

MORGAN
Construction Company



THE CONDOS AT CARPENTER

Place



*Starkville's newest
upscale community.*

Each Unit Approximately 1160 sq. feet

- Starkville Separate School District
- Metrocast Cable
- Atmos Energy & Starkville Electric and Water Department
- Underground utilities
- Curbs and gutters

There are no existing amenities on the property. All improvements shown are contemplated. The improvements need not be built. All floor plan dimensions above are approximated.



- Four-plex design
- Quality masonry construction
- Carpet and tile throughout
- Ceiling fans
- Walk-in closet in bedroom 2
- Custom cabinetry
- GE dishwasher, free standing range
- Microwave vent-a-hood
- Energy efficient insulation and central heat and air system
- Medicine cabinets in each bathroom
- Buy early and select carpet, paint and other finishes

Optional:

- Stainless steel appliances
- Crown molding throughout